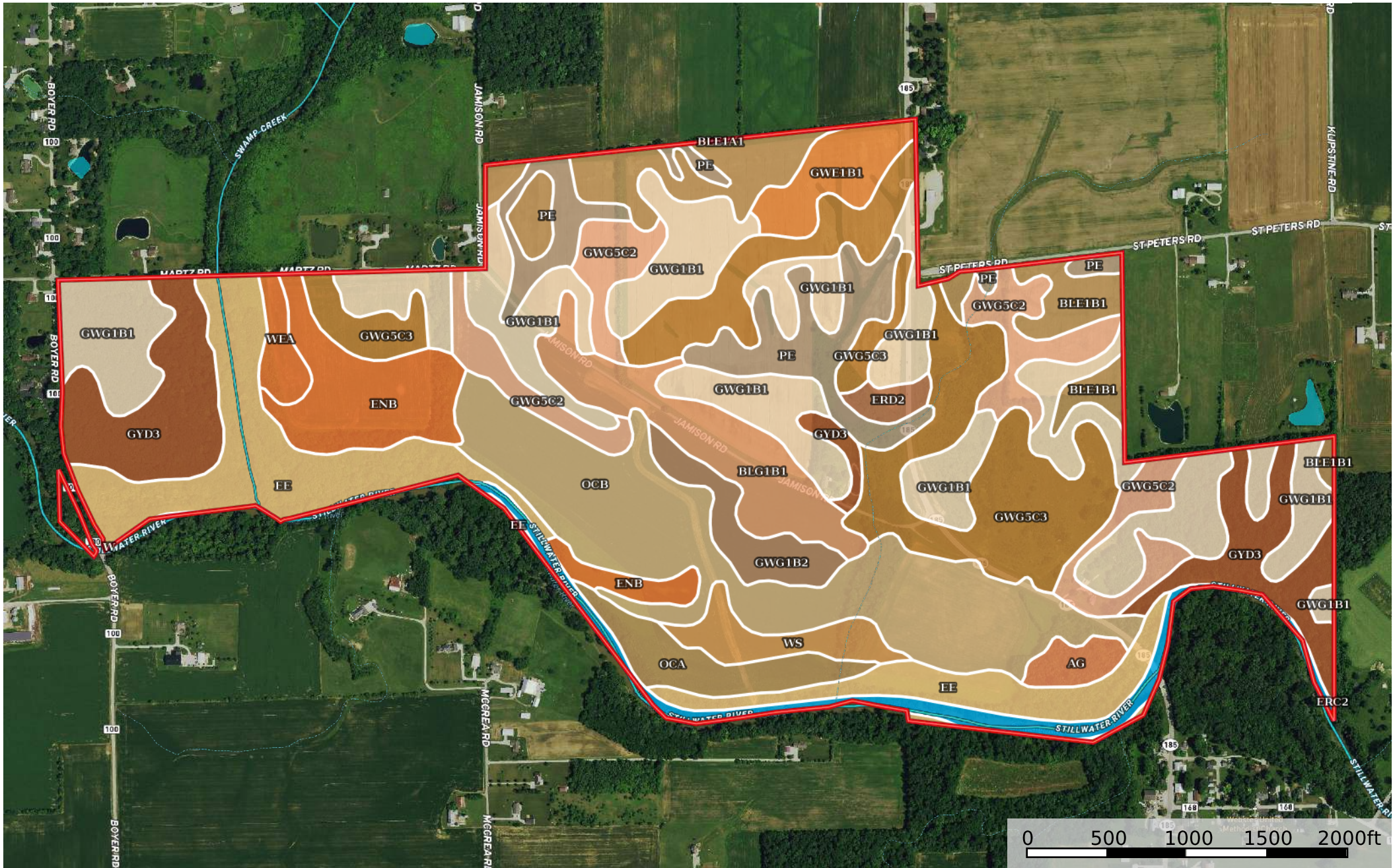


Jamison Farms

Ohio, AC +/-



- Boundary
- Stream, Intermittent
- River/Creek
- Water Body

|  Boundary 410.1 ac

| SOIL CODE | SOIL DESCRIPTION | ACRES | % | CPI | NCCPI | CAP |
|-----------|---|----------|-------|-------|-------|------|
| Gwg1B1 | Glynwood silt loam, ground moraine, 2 to 6 percent slopes | 76.89 | 18.75 | 0 | 60 | 2e |
| OcB | Ockley silt loam, Southern Ohio Till Plain, 2 to 6 percent slopes | 51.04 | 12.45 | 0 | 85 | 2e |
| Gwg5C3 | Glynwood clay loam, 6 to 12 percent slopes, severely eroded | 50.73 | 12.37 | 58 | 42 | 4e |
| Ee | Eel silt loam, occasionally flooded | 40.46 | 9.87 | 0 | 80 | 2w |
| GyD3 | Glynwood clay loam, 12 to 18 percent slopes, severely eroded | 31.19 | 7.61 | 0 | 27 | 6e |
| Gwg5C2 | Glynwood clay loam, ground moraine, 6 to 12 percent slopes, eroded | 25.5 | 6.22 | 65 | 49 | 3e |
| Ble1B1 | Blount silt loam, end moraine, 2 to 4 percent slopes | 23.0 | 5.61 | 0 | 60 | 2e |
| Pe | Pewamo silty clay loam, 0 to 1 percent slopes | 21.55 | 5.26 | 0 | 77 | 2w |
| EnB | Eldean loam, 2 to 6 percent slopes | 19.26 | 4.7 | 0 | 56 | 2e |
| Blg1B1 | Blount silt loam, ground moraine, 2 to 4 percent slopes | 18.34 | 4.47 | 0 | 60 | 2e |
| W | Water | 10.13 | 2.47 | 0 | - | - |
| OcA | Ockley silt loam, Southern Ohio Till Plain, 0 to 2 percent slopes | 9.36 | 2.28 | 0 | 78 | 1 |
| Gwe1B1 | Glynwood silt loam, end moraine, 2 to 6 percent slopes | 8.4 | 2.05 | 0 | 60 | 2e |
| Gwg1B2 | Glynwood silt loam, ground moraine, 2 to 6 percent slopes, eroded | 7.8 | 1.9 | 0 | 49 | 2e |
| Ws | Westland silty clay loam, Southern Ohio Till Plain, 0 to 2 percent slopes | 6.94 | 1.69 | 0 | 71 | 2w |
| WeA | Wea silt loam, 0 to 2 percent slopes | 3.64 | 0.89 | 0 | 88 | 1 |
| Ag | Algiers silt loam, occasionally flooded | 3.39 | 0.83 | 0 | 82 | 2w |
| ErD2 | Eldean-Miamian complex, 12 to 18 percent slopes, eroded | 2.42 | 0.59 | 0 | 56 | 4e |
| Ble1A1 | Blount silt loam, end moraine, 0 to 2 percent slopes | 0.04 | 0.01 | 0 | 62 | 2w |
| ErC2 | Eldean-Miamian complex, 6 to 12 percent slopes, eroded | 0.02 | 0.0 | 0 | 60 | 3e |
| TOTALS | | 410.1(*) | 100% | 11.22 | 59.69 | 2.61 |









(*) Total acres may differ in the second decimal compared to the sum of each acreage soil. This is due to a round error because we only show the acres of each soil with two decimal.

Capability Legend

Increased Limitations and Hazards

Decreased Adaptability and Freedom of Choice Users

Land, Capability

| |  |  |  |  |  |  |  |  |
|--------------|---|---|---|---|--|---|---|---|
| | 1 | 2 | 3 | 4 | 5 | 6 | 7 | 8 |
| 'Wild Life' | • | • | • | • | • | • | • | • |
| Forestry | • | • | • | • | • | • | • | |
| Limited | • | • | • | • | • | • | • | |
| Moderate | • | • | • | • | • | • | | |
| Intense | • | • | • | • | • | | | |
| Limited | • | • | • | • | | | | |
| Moderate | • | • | • | | | | | |
| Intense | • | • | | | | | | |
| Very Intense | • | | | | | | | |

Grazing Cultivation

(c) climatic limitations (e) susceptibility to erosion

(s) soil limitations within the rooting zone (w) excess of water